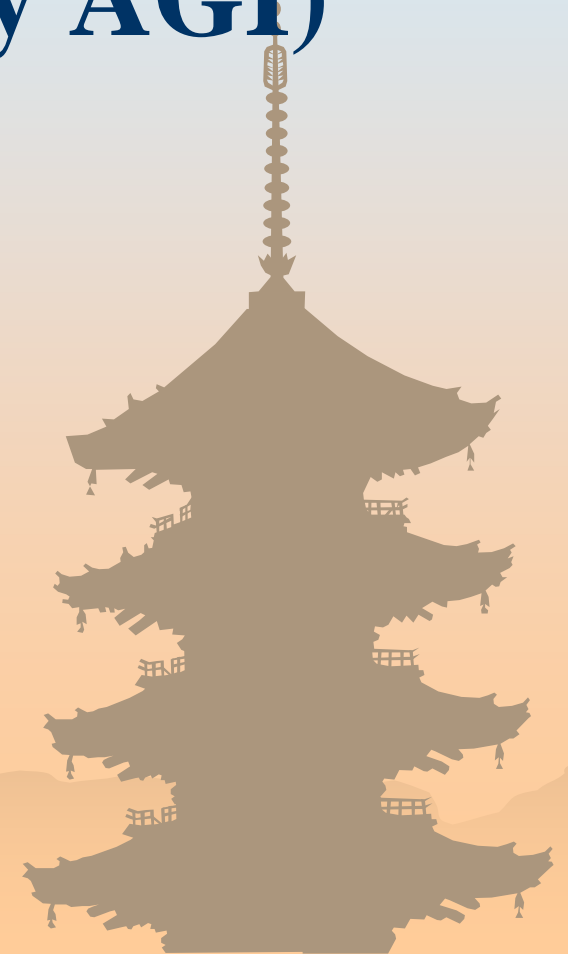


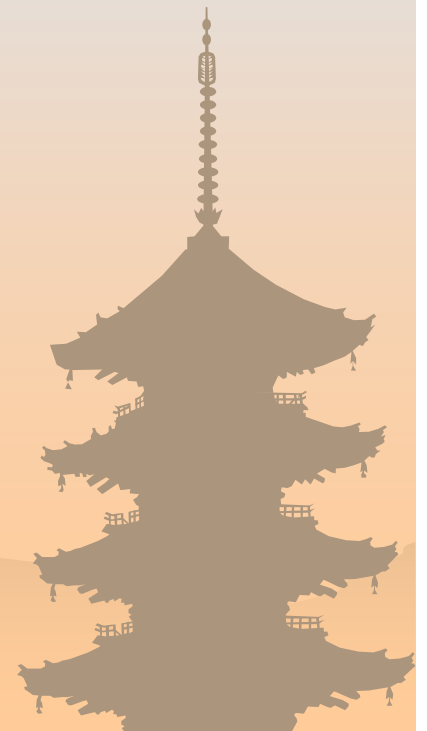
Merospheres

(Liposome designed by AGI)



The Characteristic of AGI liposome

- ❁ **Effective penetration to epidermis**
- ❁ **Can delivery into the Epidermis**
(particle size about 100nm)
- ❁ **Can reach into cell**
- ❁ **Release the enzyme in Cell**



AGI Liposomes :

Phosphatidyl Ethanolamine



← pH sensitive

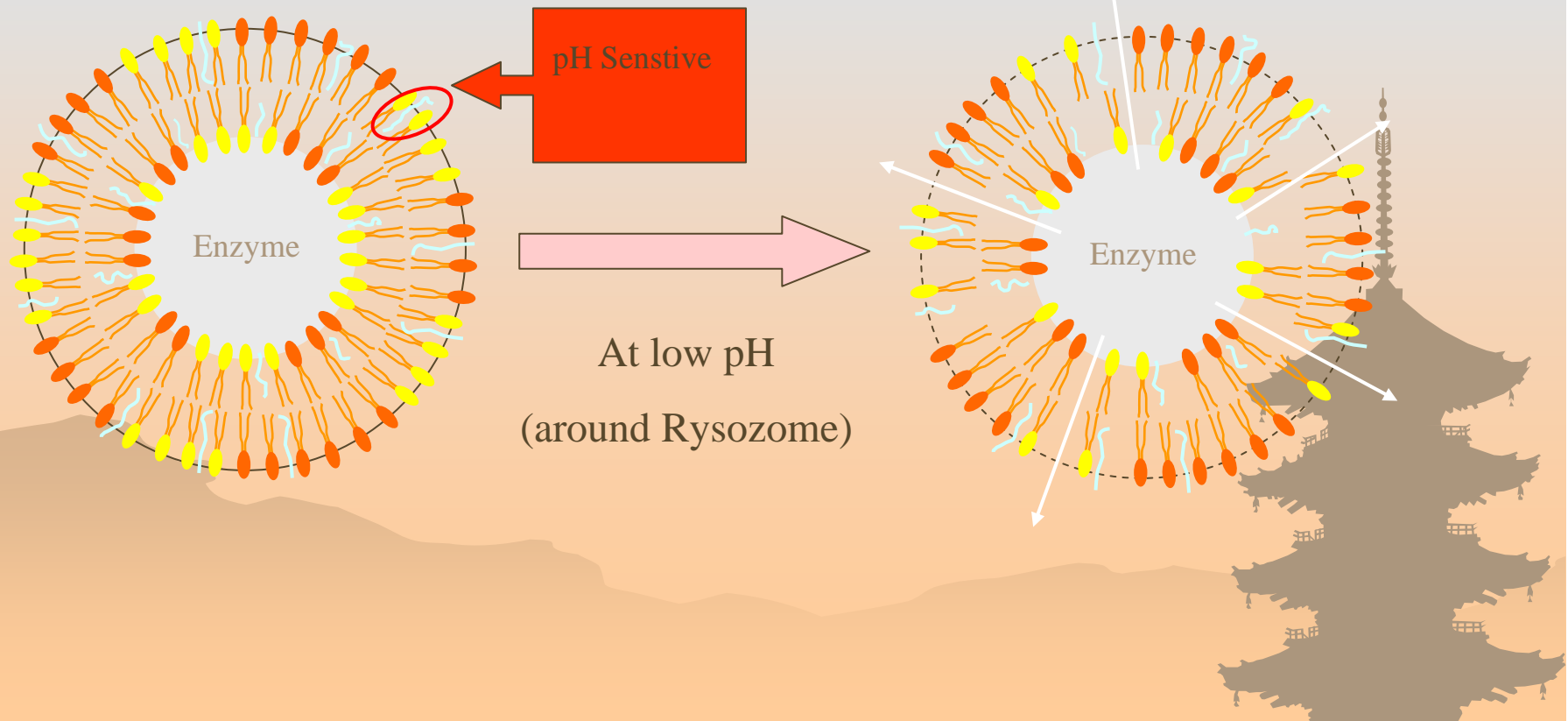
Phosphatidyl Coline and Oleic Acid



Cholesteryl Hemisuccinate



← Improve uptake into cell

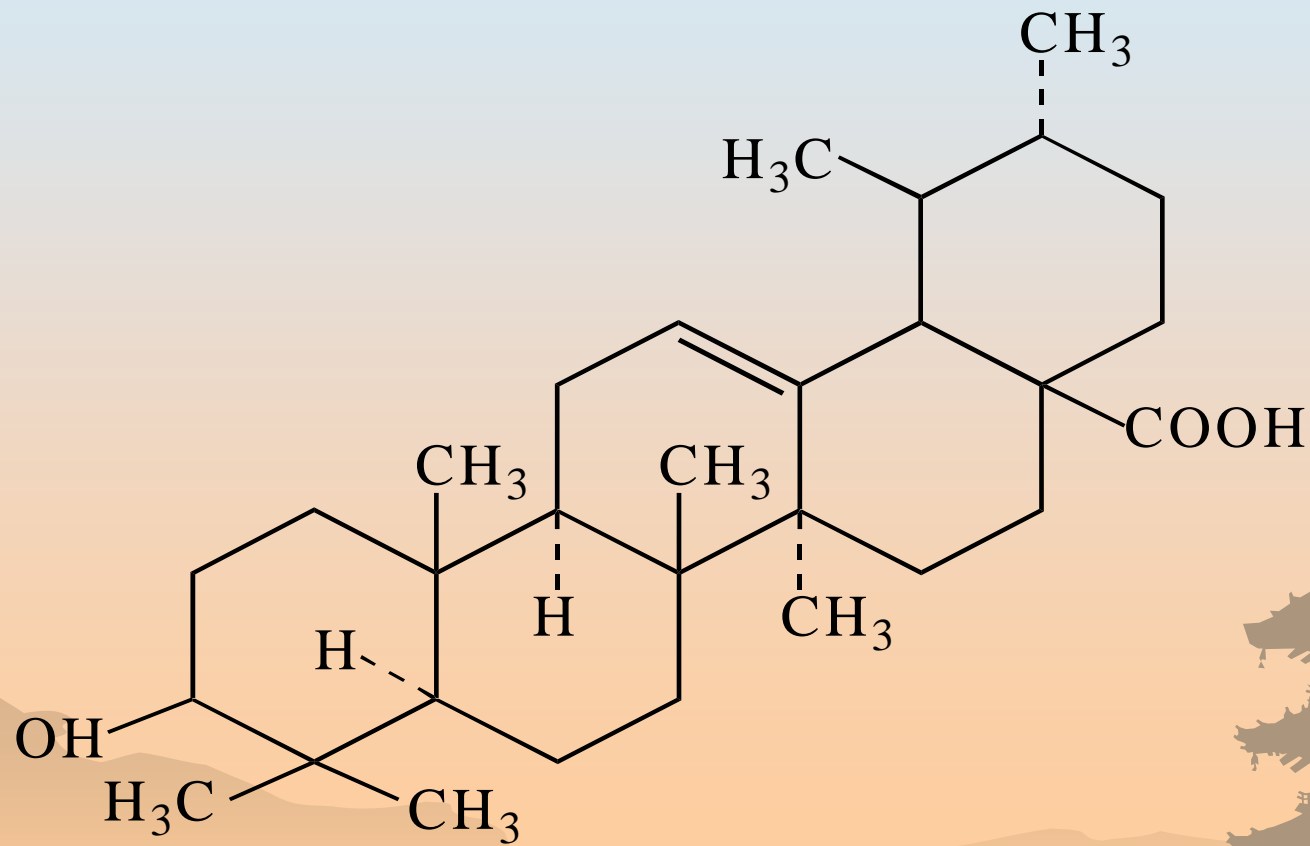


Merospheres

- ❁ Carry Ulsoric Acid to Keratinocytes
- ❁ Accelerate production of Lipid (Ceramides, Cholesterol Ester, Fatty Acid) (in vitro Test)
- ❁ Ceramide quantity in 50's reached the level of 20's after applying 1% Merospheres for eleven days in vivo test
- ❁ Accelerate production of collagen in human fibrocyte

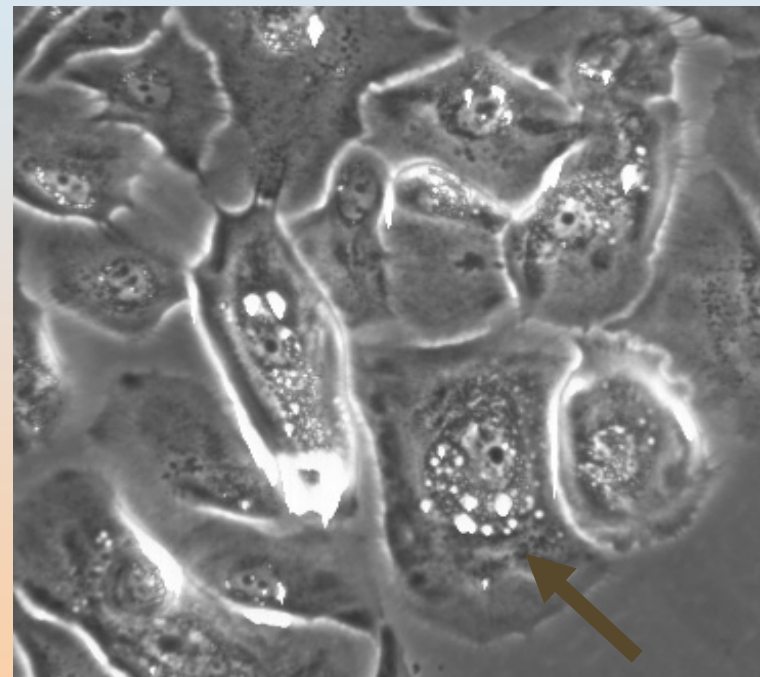
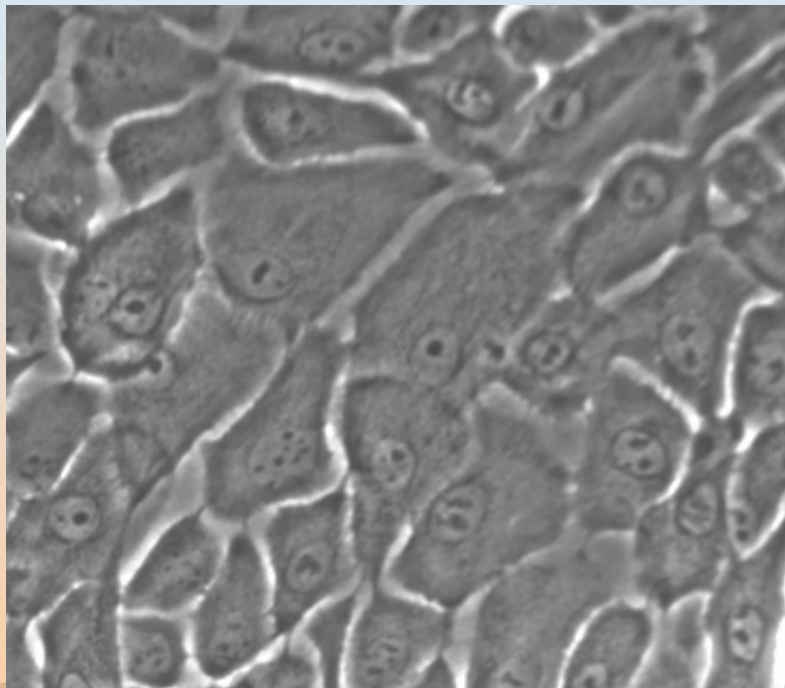


Merospheres (Active Ingredient Ulsoric acid)



Merospheres

Carry Ulsoric Acid to Keratinocyte

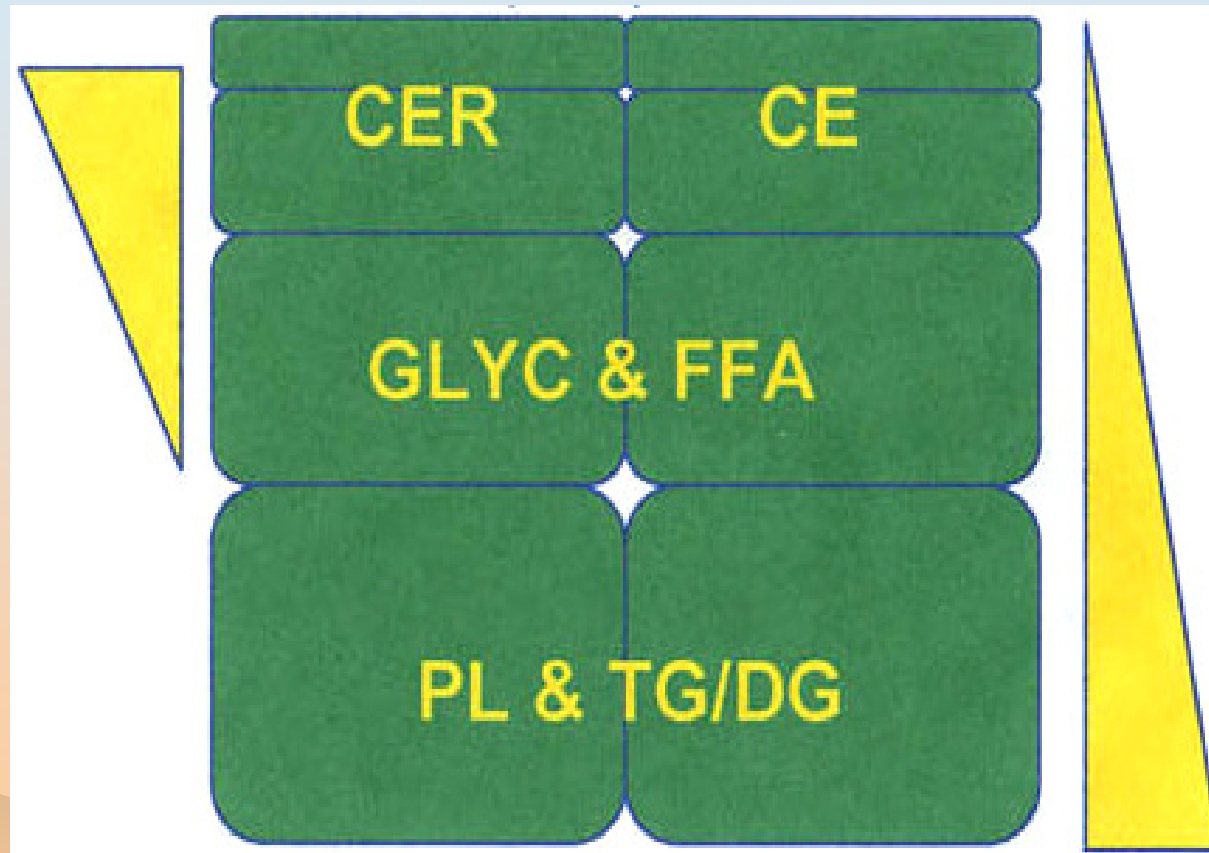


Ceramide

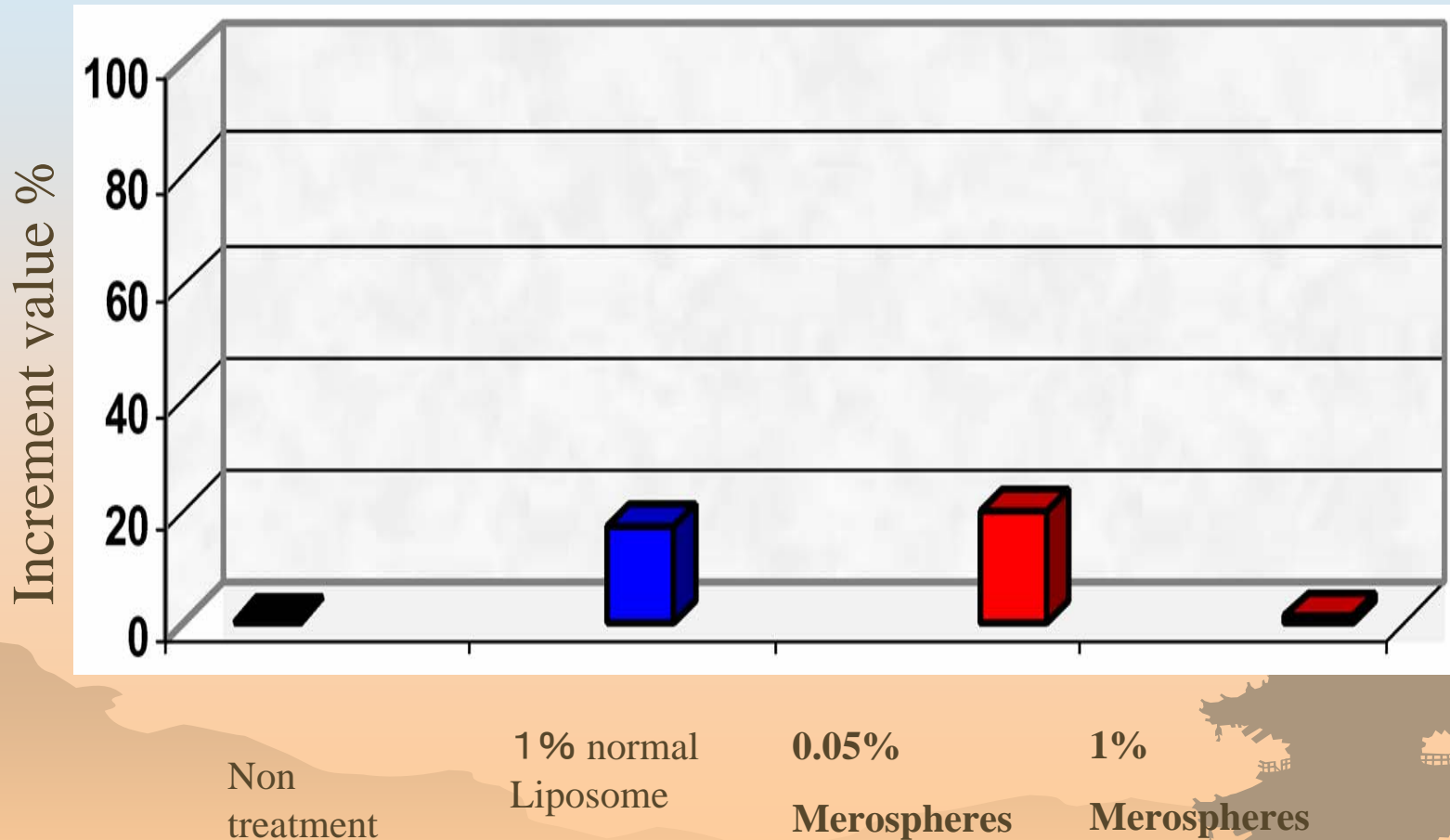
の液胞

Merospheres

Lipid in skin

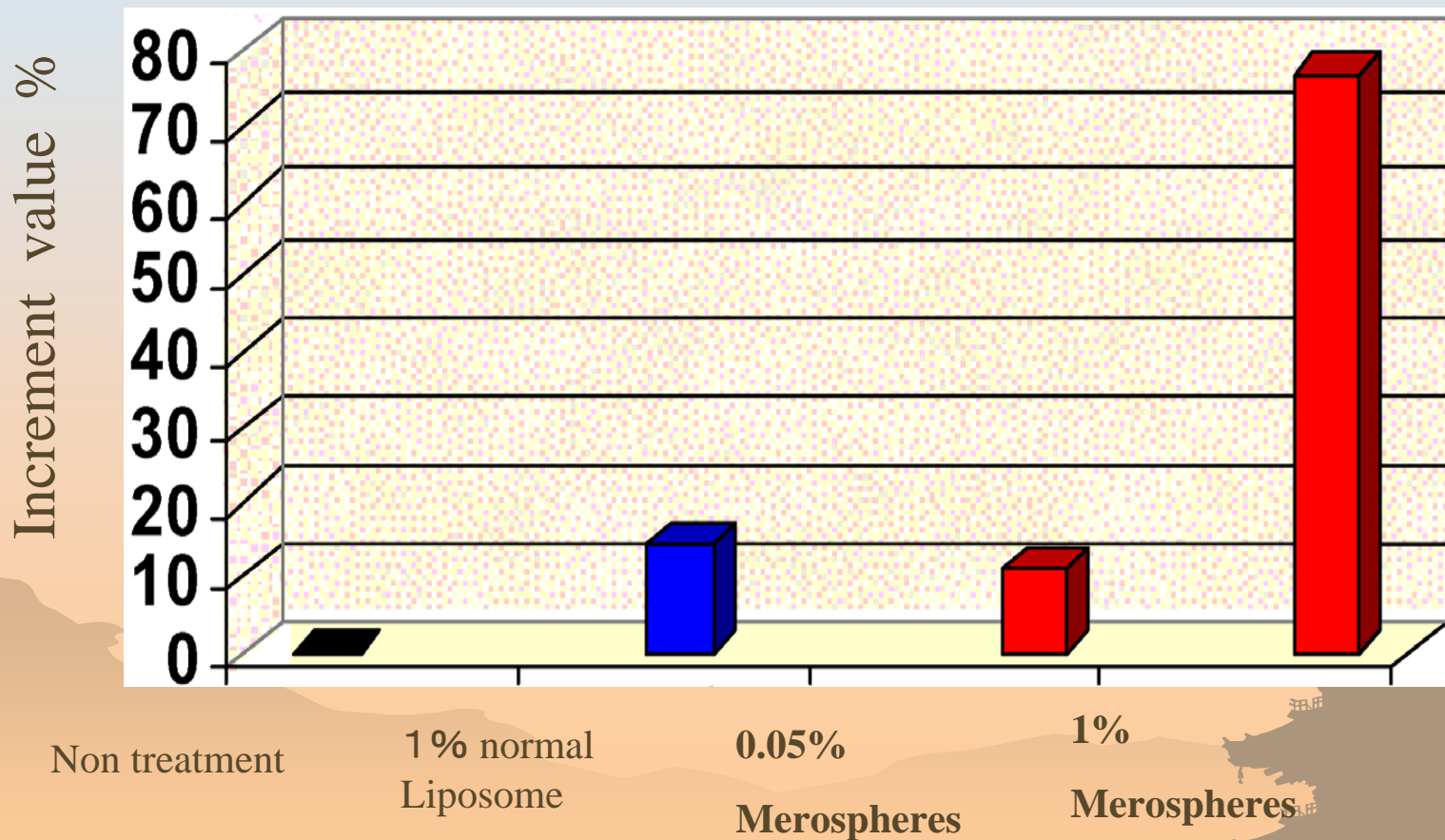


Merospheres don't influence production of Phospholipid



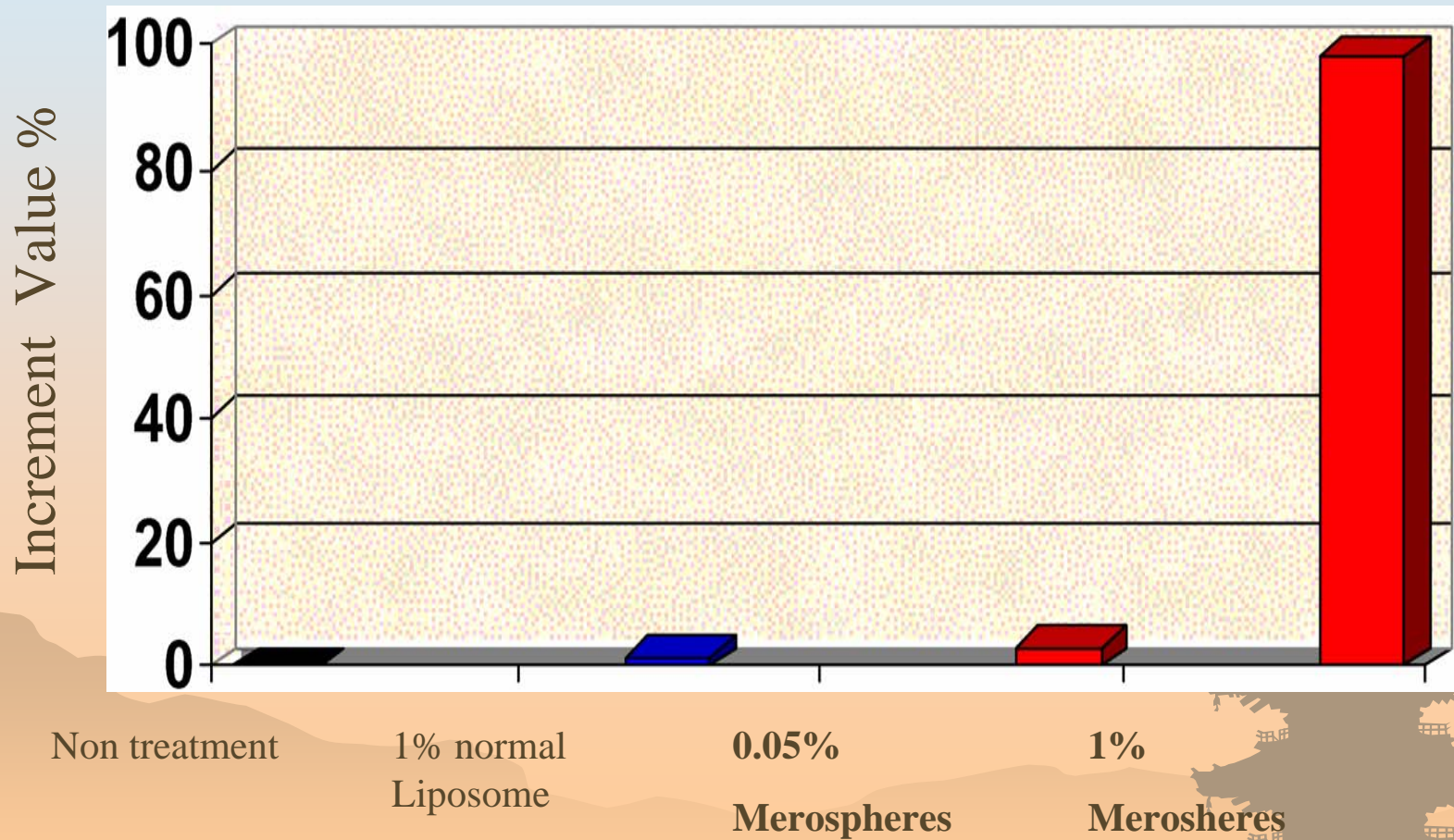
Merosheres

Accelerate production fatty acid



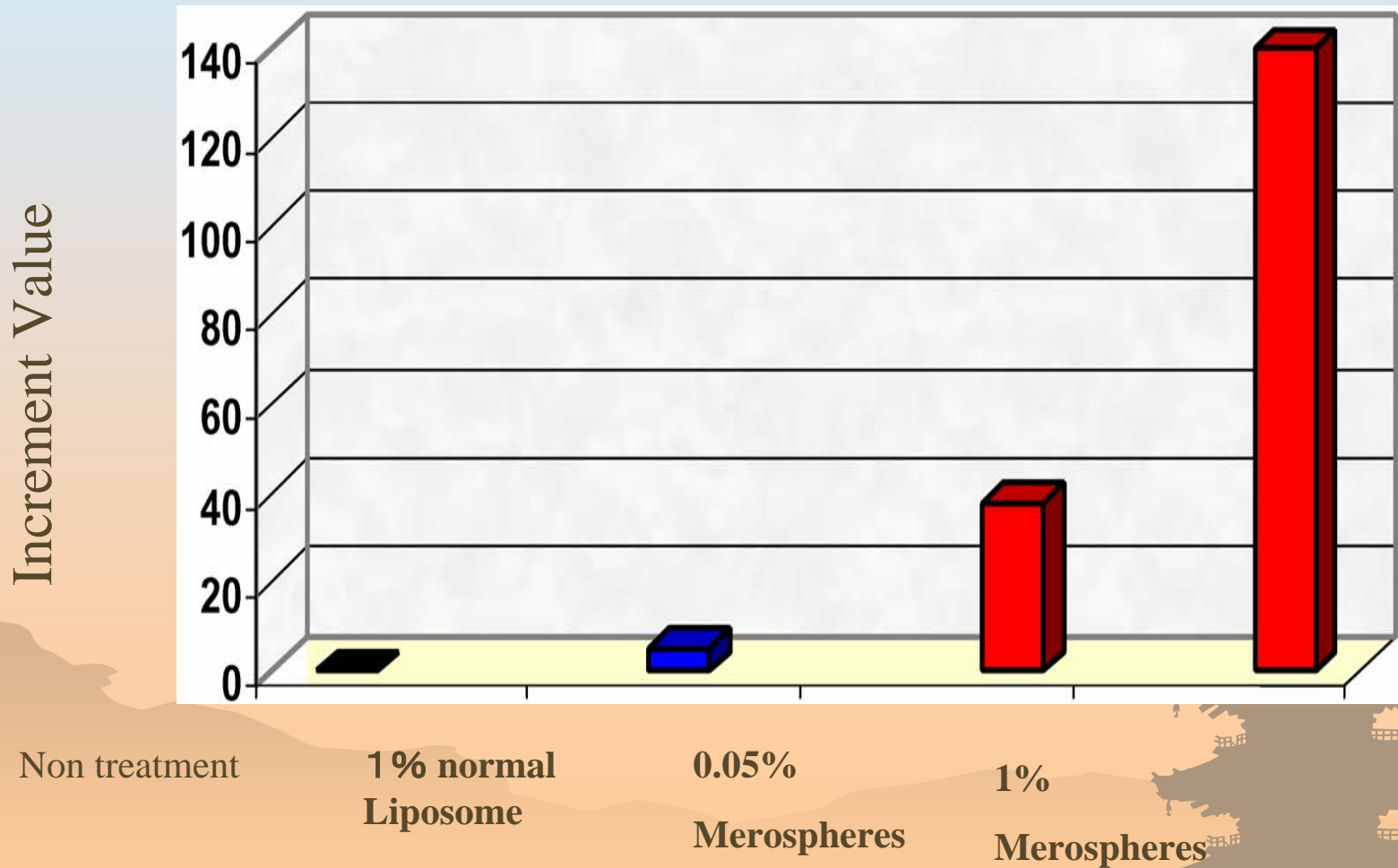
Merosperes

Accelerate of production Cholesterol



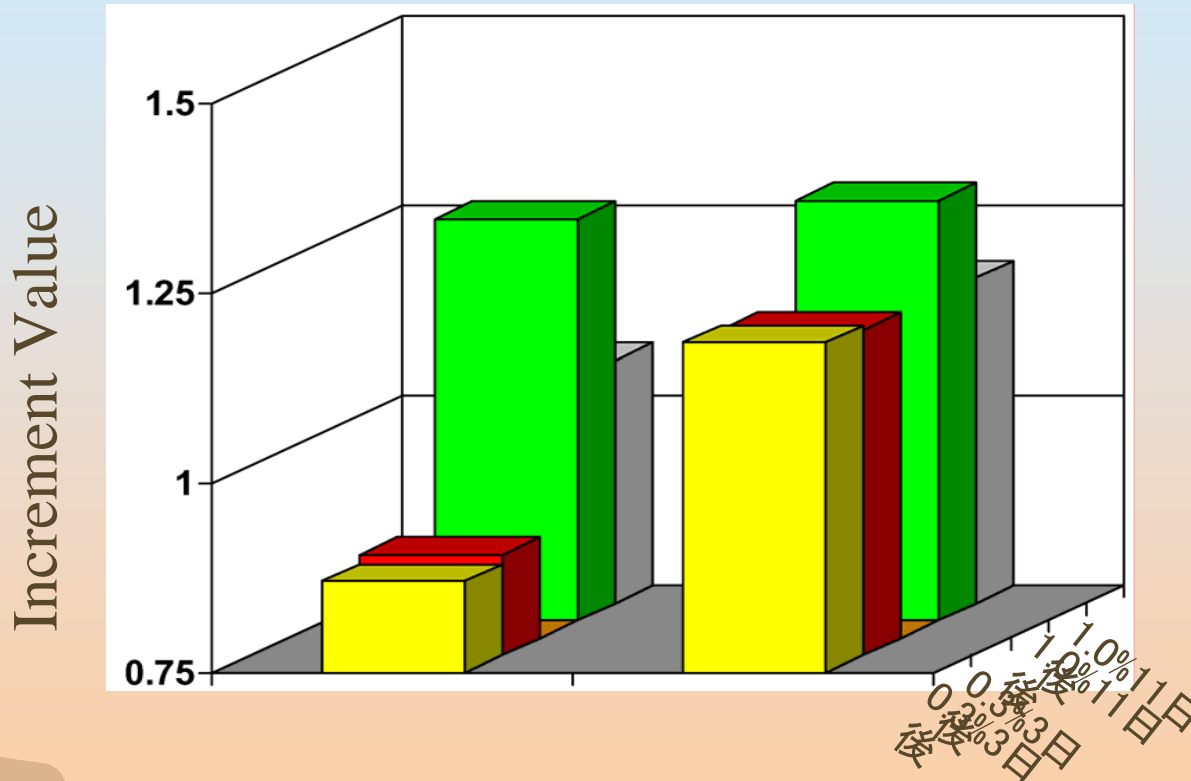
Merospheres

Accelerate of production of Ceramide



Merospheres

The quantity of Ceramide



NonOH-Ceramide

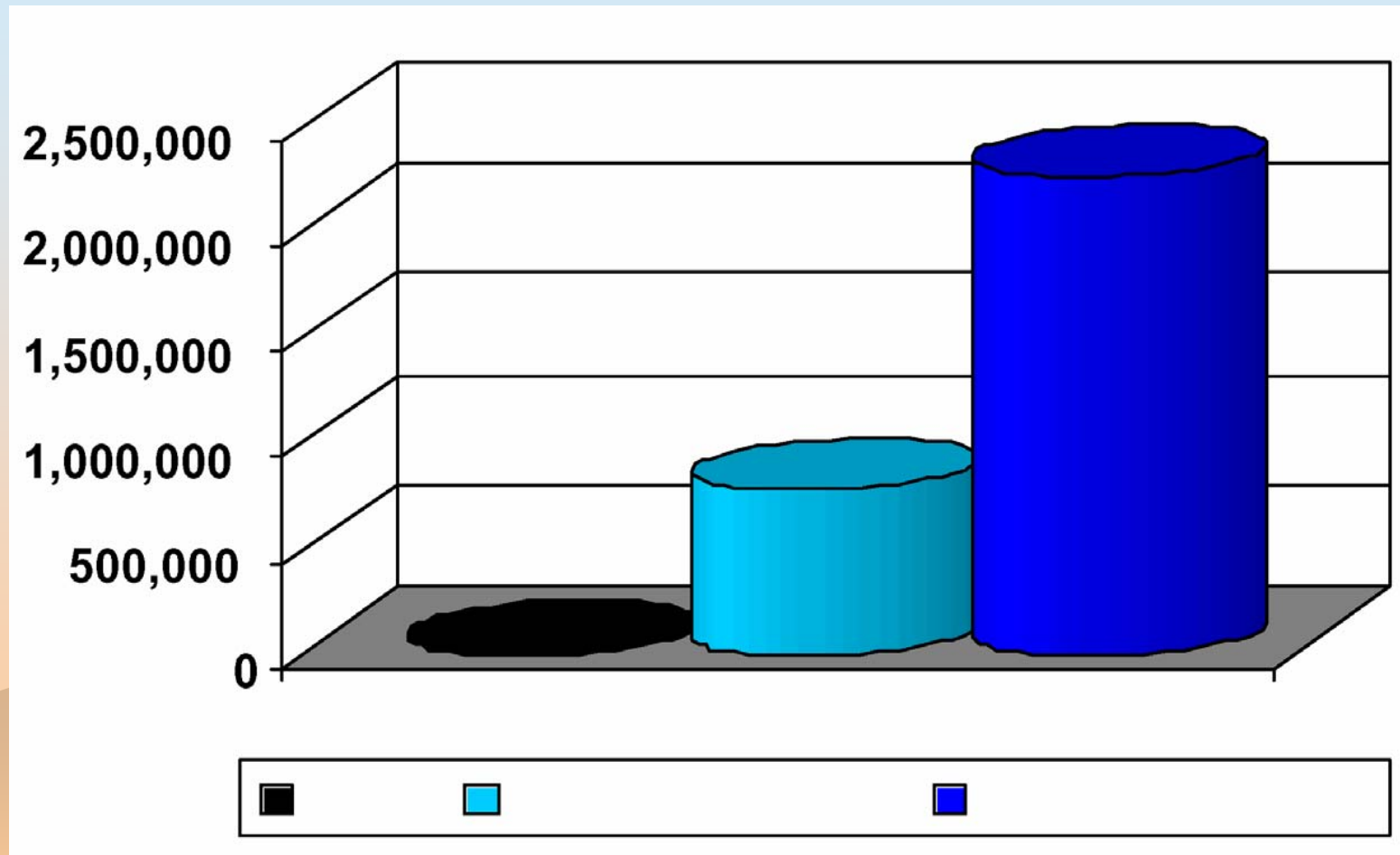
OH-Ceramide

Twice a day for eleven days



Merospheres

プロコラーゲンの産生促進



Merospheres Conclusion

- ❁ Carry Ulsoric Acid to Keratinocytes
- ❁ Accelerate production of Lipid (Ceramides, Cholesterol Ester, Fatty Acid) (in vitro Test)
- ❁ Ceramide quantity in 50's reached the level of 20's after applying 1% Merospheres for eleven days in vivo test
- ❁ Accelerate production of collagen in human fibrocyte

